

# ERP 6.0

## Upgrade to the Future

### OVERVIEW

e-Emphasys ERP 6.0 is a futuristic Enterprise Platform for equipment dealers and rental companies.

### KEY FEATURES

#### TECHNOLOGY KEEPS YOU AHEAD

Long-term innovation compatibility makes your business future-proof.

#### LEVERAGE NEW FEATURES

With improved accessibility to mobile applications, on-field tasks such as Order Approvals and Alerts are more simplified.

#### THE LATEST VERSION OF OS AND SQL

The latest Operating System comes with security updates to ensure improved software stability, along with built-in Security Token Services (STS) supporting Multi Factor Authentication (MFA) and any SAML 2.0 compliant identity provider.

#### NO PROCESS CHANGES

Works with your existing business processes. Technical Stack upgrade offers stronger framework and better tools to work with.

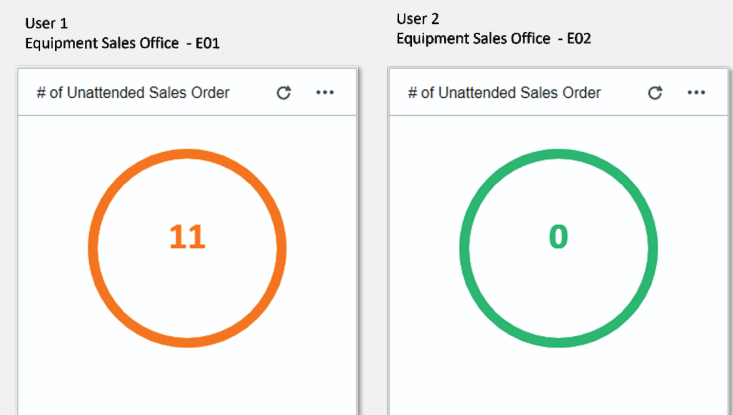
#### QUICK UI TRAINING

Easy hands-on training makes you familiar with the new and more meaningful User Interface. Experience increased engagement and retention with the next-generation Role-based Widgets that are configurable by branch and users.

### BENEFITS

#### COUNT WIDGET ENHANCEMENTS

- Role-based widgets.
- New configuration option to color the widget based on the count to indicate severity.



Count Widgets Enhancements

#### TASK MANAGER WIDGET

- See all tasks for a given workflow.
- Reassign tasks to others in the distribution list or add in others ad hoc.

#### TASK WATCHER WIDGET

- View all tasks for a given workflow in 'Read Only' mode.

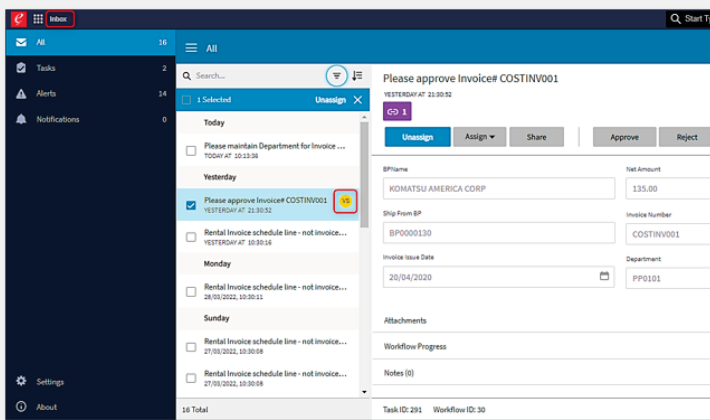
Task ID: 292 Workflow ID: 31

Task View from Task Manager Widget



## INBOX VIEW (TASKS, ALERTS AND NOTIFICATIONS) ON A SINGLE SCREEN

- Rich UI for Tasks offers more space to view bigger content.
- Indicator to show if the Task is assigned or not at the subject level.
- Option to sort and filter the content of the inbox.



All Tasks, Alerts and Notifications on a single screen

## IN-CONTEXT GOOGLE MAP

- Shows the location in Google Maps in context with the selected ERP records.
- User has the option to update the address in ERP by just moving the marker to an appropriate location.

## SMART REPORTING SERVICES

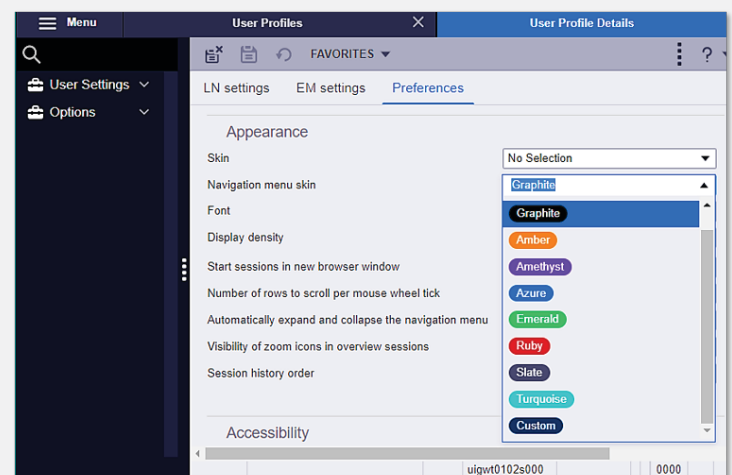
- New Report Designer Tool integrated with the Product Tool.
- With format-independent printing, format-specific devices are no longer required.
- No more dependency on external reporting services.

## DOCUMENT MANAGEMENT ENHANCEMENTS

- Option to download Multiple documents in one go.
- Retention policy to automatically Archive, Delete or Purge documents.
- Restore Archived/Deleted documents.
- New options in Context App-related information pane: Download document in Original Format, PDF Download, Print and Send in e-mail.

## UX Enhancements

- Skin Preferences & Custom Skin Editor
- Quick Selection of Items in List Boxes
- Customizeable Home Button
- Profile Header
- Bookmarks
- Improved Menu Navigation
- Node Search
- Session Order History
- Conditional Formatting
- Corporate Colors



Custom Skin Preferences